

PHX Employee Parking



Last Modified on 10/01/2024 9:38 am MDT

The PHX Employee parking lot is located on 4201 East Madison St. Phoenix.

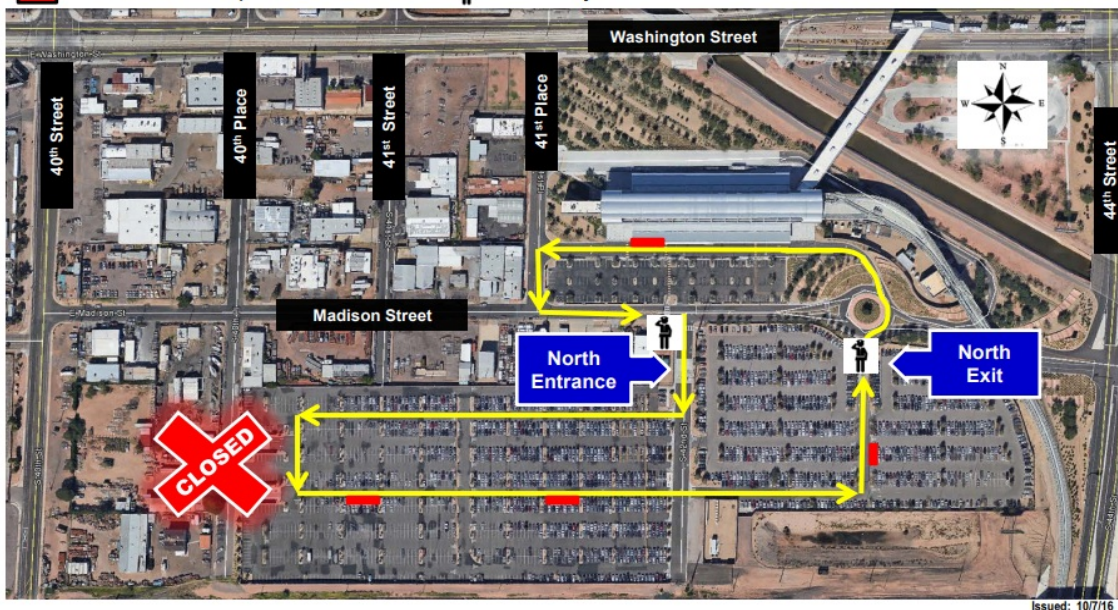


44TH St. Employee Parking Facility

4201 E. Madison St., Phoenix

 = Circulator Route
 = Circulator Stops

 = West Entry/Exit Closed effective 10/10/16
 = Security Guard Posted effective 10/14/16



To obtain access to the employee parking you must complete and fill out the PHX Employee Parking Agreement form which is available in the Inflight Office. Be sure to send a completed copy of the form to your inflight supervisor in order to expedite your request.

Keep in mind parking spots will be assigned based on availability. Upon receiving your Parking Card, you will be advised of your assigned parking location.

Parking Reminders

- If you need immediate parking, and have not applied for employee parking, please utilize the ECONOMY PARKING LOT.
- If you park before you receive your parking card, keep your receipt, and submit via Coupa for reimbursement.
- If you commute and park out of base, you will get a \$36 stipend via payroll.
- The Company will not be responsible for paying any expenses after ninety (90) days from the date of any transaction.
- If a Flight Attendant transfers bases and they have been on a parking pass stipend list in that base, it is their responsibility to notify their new base leadership of their preference regarding obtaining a

parking pass in the new base or continuing the parking pass stipend in the new base.
